



QLCOMMANDER

QLCommander (QLC) is a orthodox file manager (OFM), inspired by the Norton Commander that was widely used in late '80s and during the 1990's on PCs. QLC provides a text-based user interface for managing files on top of QDOS, on expanded QLS

QLC is easy to use because the user has a constant view of two file manipulation objects at once (panels with file lists). Each panel can be easily configured to show information about a drive or a directory. At the bottom of the screen QLC displays a list of commands that are accessible using the function keys. Thus, without the use of the mouse (although mouse functionality is planned to be integrated), the user is able to perform many file manipulation actions quickly and efficiently.

Instalation

To install the program follow the steps:

1. Create a directory for QLC
e.g win2_QLCOMMANDER_
2. Create a directory for temporary files, if you do not already have one
e.g. win2_TEMP
3. unzip QLC_zip into tQLC directory. You should have the following files:
 - 5pixels_fnt
 - bold8_fnt
 - qlc_bas
 - qlc_boot
 - qlc_cfg
 - qlc_code
 - qlcconfig_bas
 - quill_view
 - unzip
4. load the (very crude) conguration program qlcconfig_cfg and edit it to match your configuration

Row	Variable	Description
100	ConfigDrv\$	The directory where QLC is installed
140	MaxFiles%	Maximum number of files and subdirs to load from a dir, including the fake dir ..-> that acts as DDUP
160	TempDir\$	Temporary dir used by some viewers
180	leftDir\$	Drive or dir to load in left panel at program start
200	rightDir\$	Drive or dir to load in right panel at program start
220	Qubide%	If you have a QUBIDE drive set this to 1 The QUBIDE interface does not allow you to use MAKE_DIR to create a sub-directory if any files already exist which would fall into that sub-directory
240	ClassicFont%	Accepted values 0 or 1 1= QLC will use the classic QL font (6 pixels wide) to list the files in the panels 0=QLC will use the narrow font (5 pixels wide) to list the files in the panels
260	linelen%=40	The number of characters per line in a panel If ClassicFont%=1 then linelen% should be between 36 and 42 If ClassicFont%=0 then linelen% should be between 44 and 50 and even number This permits to scale the width of QLC on monitor

5. Run qlcconfig_bas. It will overwrite the configuration file file qlc_cfg
Observation: You can of course edit the qlc_file with an editor :)
6. Run QLC_boot

Using QLCOMMANDER

Warning:

The basic version of QLCCOMMANDER is provided for testing, bug fixing and improvements. On an unexpanded QL the loading of directory lists is quite slow. On a QL+GoldCard it is bearable. On QL+SuperGoldCard or faster computer it runs ok. But still it needs to be compiled.

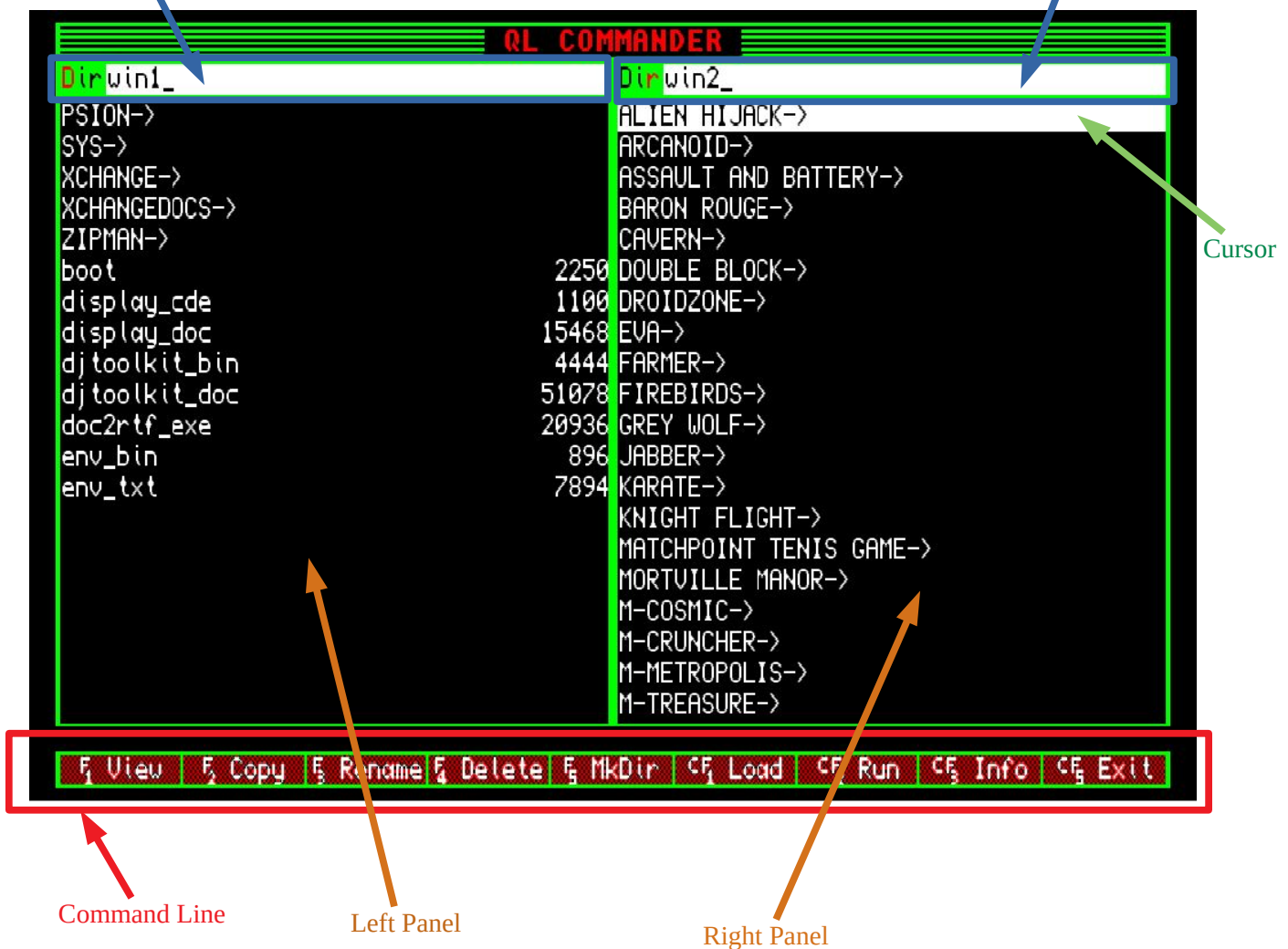
Extensions used

QLC uses the following extensions : More_code, Header_code and Function_code, all from DIY Toolkit. All 3 extensions have been packed in file qlc_code It also uses PE (just Outln function)

The QLC Screen

LeftDir\$
the selected directory listed in left panel

RightDir\$
the selected directory listed in right panel



Convention: Regardless on how are saved on the QL drive:

- All directories are shown in uppercase
- All files are shown in lowercase

Commands

Command	Description
Ctrl-d	Change the directory listed in the left panel (edit box in place)
Ctrl-r	Change the directory listed in the right panel (edit box in place)
Tab	Change active panel
Up arrow	Move the cursor one item up in the list
Down arrow	Move the cursor one item down in the list
Alt-Up arrow	Move the cursor one page up in the list
Alt-Down arrow	Move the cursor one page down in the list
Enter	If cursor is on item ..-> then go one level up on the directory tree If cursor is on a directory then go one level down on the directory tree, into the selected directory
Space	Select the item under the cursor for further operation. If the item is selected it will deselect it Selected items are printed in red
Alt-a	Show About box
a.. z a umlaut..oe diphthong	Move cursor to first file that starts with the letter. If none found then move to first file that starts with a letter greater than that
A.. Z A umlaut..OE diphthong	Move cursor to first directory that starts with the letter. If none found then move to first file that starts with a letter greater than that
0..9	Move cursor to next file or directory that starts with that number
F1	View the file under the cursor
F2	Copy the selected items to the other panel (in the directory currently displayed in the other panel) If there are no selected items then it will copy the item under the cursor
F3	Rename the file under the cursor. It is not possible to rename directories
F4	Deletes the selected items If there are no selected items then it will delete the item under the cursor All delete operations require confirmation from user
F5	Make Directory
Ctrl-F1 Ctrl-F2	Loads the file under the cursor if it has <code>_bas</code> extension
Ctrl-F3	Ex_W the file under the cursor, if it is EXECable
Ctrl-F4	Exit program. In compiled version this combination will not be used, but in BASIC version it is necessary because on Qemulator Ctrl-F5 is trapped by Windows
Ctrl-F5	Exit program (does not function in Qmulator because Ctrl-F5 is trapped by Windows)

Viewing files

All files can be viewed, but some have dedicated viewers:

- Font files (`_fnt` and `_fat`)
- Quill documents (`_doc`)
- Zip archives (`_zip`)
- Text files (all other extensions)

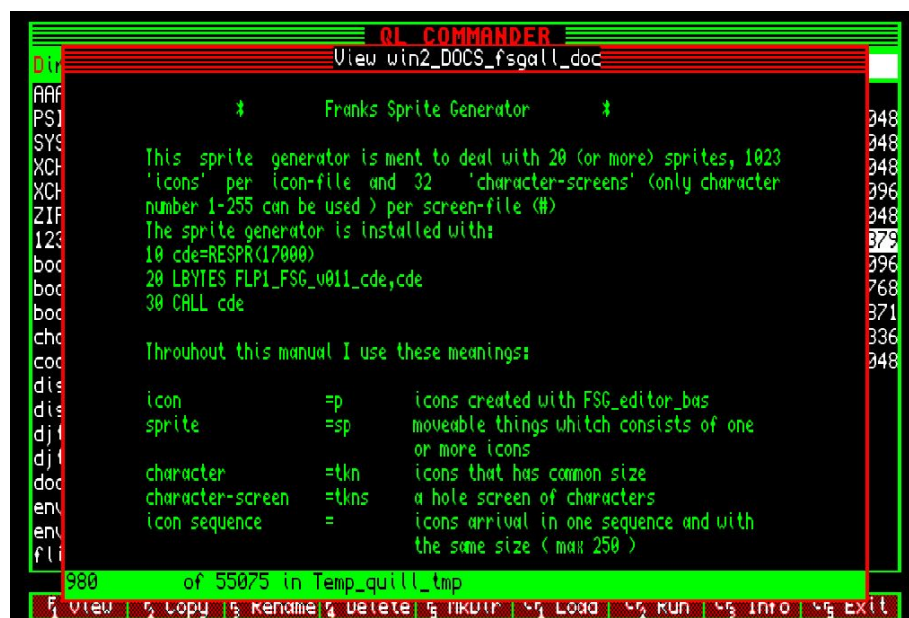
View a Font file

For viewing Font files move cursor over a a font file that has _fnt or _fat extension and press F1



[View Quill document](#)

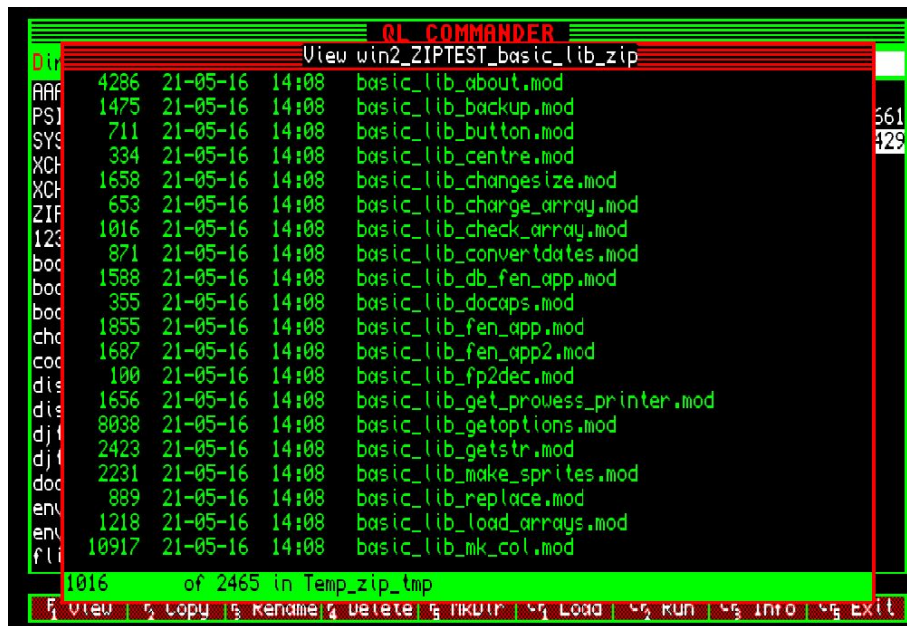
For viewing a Quill document file move cursor over a the file press F1. File must have `_doc` extension in order to be recognized as a Quill doc, and a valid Quill header. QLC will execute *quill_view* that will create a fair rendition of the document in text mode, in the temporary directory, and then will call *more* extension to view the file. Press ESC to exit the viewer.



View Zip archive

For viewing a Zip archive move cursor over a the file press F1. File must have `_zip` extension in order to be recognized as a zip document. QLC will execute *unzip* that will create a temprary file in the temporary directory, and than will call *more* extension to view the file. Press ESC to exit the viewer.

Observation – Probably Unzip bug – This process works only with unzip v5.0 or older. Newer versions do not ever finish creating a file in quiet mode !



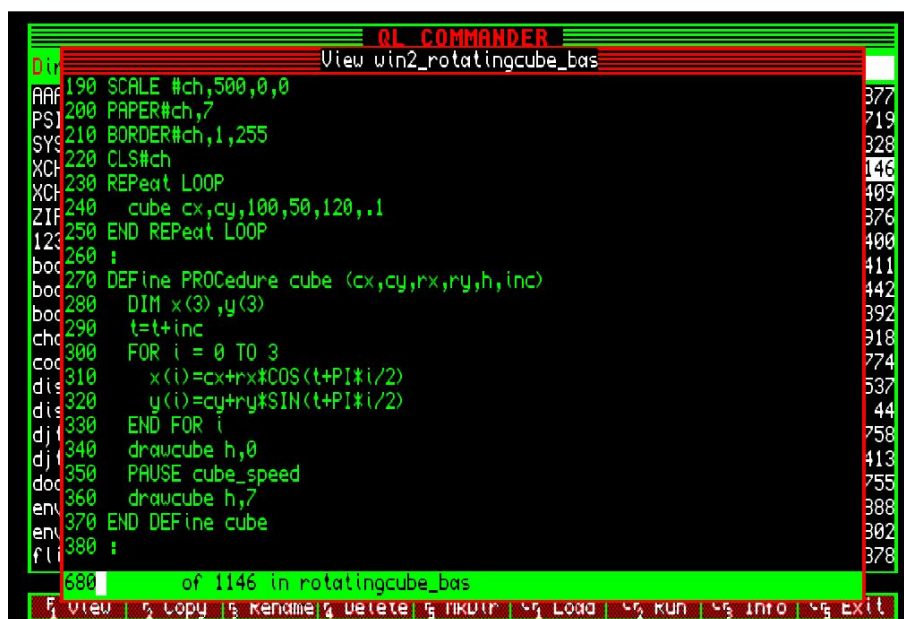
The screenshot shows the QLC Commander interface with a file list for 'win2_ZIPTEST_basic_lib_zip'. The list includes files like 'basic_lib_about.mod', 'basic_lib_backup.mod', 'basic_lib_button.mod', etc. The status bar at the bottom indicates '1016 of 2465 in Temp_zip_tmp'.

File	Size	Date	Time	Path
basic_lib_about.mod	4286	21-05-16	14:08	basic_lib_about.mod
basic_lib_backup.mod	1475	21-05-16	14:08	basic_lib_backup.mod
basic_lib_button.mod	711	21-05-16	14:08	basic_lib_button.mod
basic_lib_centre.mod	334	21-05-16	14:08	basic_lib_centre.mod
basic_lib_changesize.mod	1658	21-05-16	14:08	basic_lib_changesize.mod
basic_lib_charge_array.mod	653	21-05-16	14:08	basic_lib_charge_array.mod
basic_lib_check_array.mod	1016	21-05-16	14:08	basic_lib_check_array.mod
basic_lib_convertdates.mod	871	21-05-16	14:08	basic_lib_convertdates.mod
basic_lib_db_fen_app.mod	1588	21-05-16	14:08	basic_lib_db_fen_app.mod
basic_lib_docaps.mod	355	21-05-16	14:08	basic_lib_docaps.mod
basic_lib_fen_app.mod	1855	21-05-16	14:08	basic_lib_fen_app.mod
basic_lib_fen_app2.mod	1687	21-05-16	14:08	basic_lib_fen_app2.mod
basic_lib_fp2dec.mod	100	21-05-16	14:08	basic_lib_fp2dec.mod
basic_lib_get_provess_printer.mod	1656	21-05-16	14:08	basic_lib_get_provess_printer.mod
basic_lib_getoptions.mod	8038	21-05-16	14:08	basic_lib_getoptions.mod
basic_lib_getstr.mod	2423	21-05-16	14:08	basic_lib_getstr.mod
basic_lib_make_sprites.mod	2231	21-05-16	14:08	basic_lib_make_sprites.mod
basic_lib_replace.mod	889	21-05-16	14:08	basic_lib_replace.mod
basic_lib_load_arrays.mod	1218	21-05-16	14:08	basic_lib_load_arrays.mod
basic_lib_mk_col.mod	10917	21-05-16	14:08	basic_lib_mk_col.mod

View any other document type

For viewing, as you already guessed, move cursor over a the file press F1. QLC will call *more* extension to view the file. Press ESC to exit the viewer.

If the file is a plain file (a `_bas` file, text file etc) then it will be readable.



The screenshot shows the QLC Commander interface with a file list for 'win2_rotatingcube_bas'. The list includes a file named 'rotatingcube_bas'. The status bar at the bottom indicates '680 of 1146 in rotatingcube_bas'.

```
190 SCALE #ch,500,0,0
200 PAPER#ch,7
210 BORDER#ch,1,255
220 CLS#ch
230 REPEAT LOOP
240   cube cx,cy,100,50,120,.1
250 END REPEAT LOOP
260 :
270 DEFine PROCedure cube (cx,cy,rx,ry,h,inc)
280   DIM x(3),y(3)
290   t=t+inc
300   FOR i = 0 TO 3
310     x(i)=cx+rx*COS(t+PI*i/2)
320     y(i)=cy+ry*SIN(t+PI*i/2)
330   END FOR i
340   drawcube h,0
350   PAUSE cube_speed
360   drawcube h,7
370 END DEFine cube
380 :
```

Create a directory

To create a directory just press F5 – the Create Directory window will appear and you will be able to enter the directory name., then press Enter.

If you leave the edit box empty and press Enter the creation is canceled

Possible Bug: Creating a directory uses FMAKE_DIR function.

The SBASIC/SuperBASIC Reference Manual Online states:

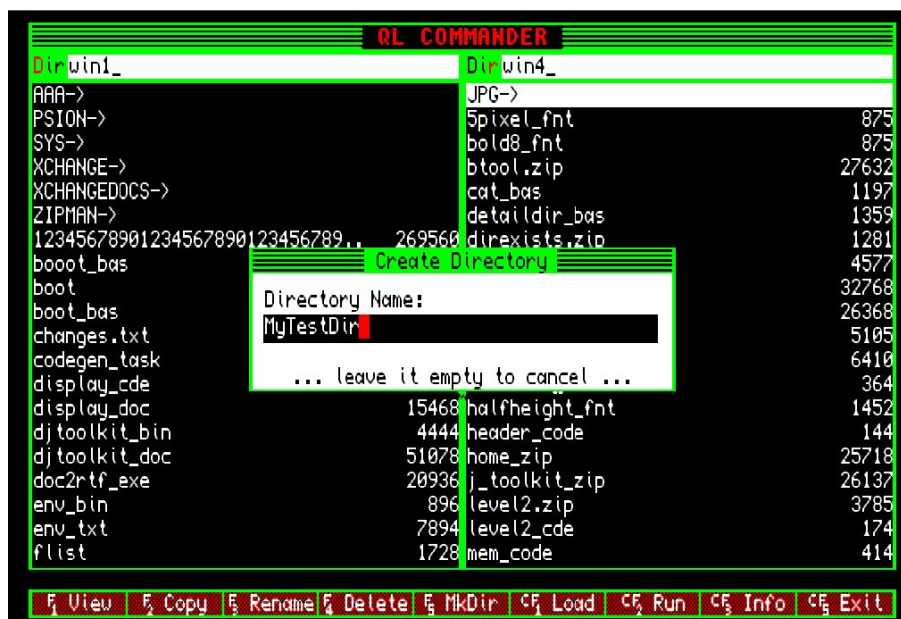
FMAKE_DIR is identical to MAKE_DIR except that it is a function and does not stop a program if an error occurs, instead it returns the code of the error concerned.

The following errors need some explanation:

Error -9 (in use) : There is already a sub-directory with the same name;

Error -8 (already exists) : File (not a sub-directory) exists already with that name;

In Qemulator it return -8 in both cases !



Copy files

Copy a single file

Move the cursor over the file and press F2. The file will be copied in the directory currently selected in the other panel.

Copying a single file does not require confirmation from the user

Copy a single directory

Move the cursor over the directory and press F2. The directory will be copied in the directory currently selected in the other panel.

Copying a single directory requires confirmation from the user

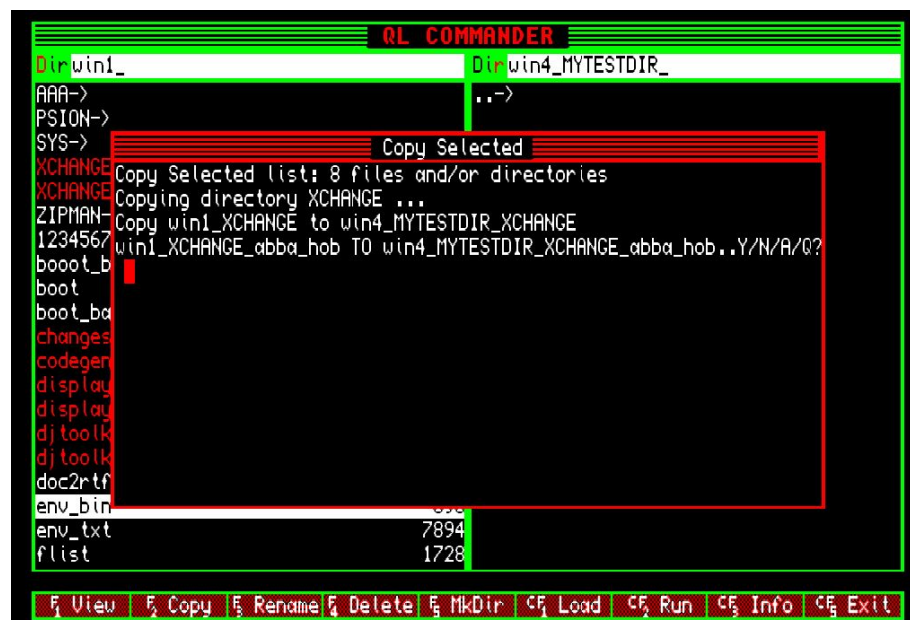
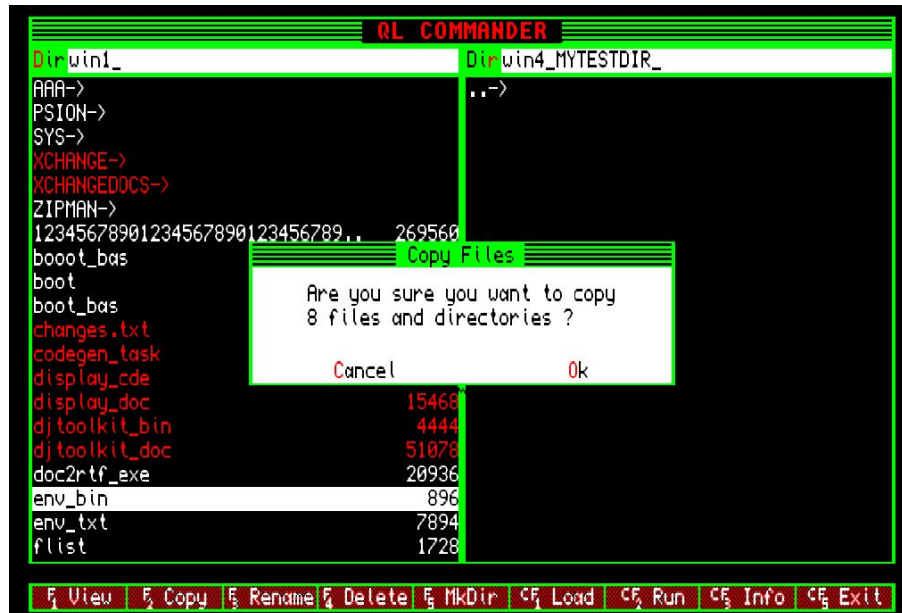
Attention: Copy process will not copy any subdirectories of the directory you are copying !

Copy multiple files and/or directories

First select all the files/directories to copy using SPACE key . The selected items will be written with red. Then press F2.

Copying multiple files and/or directories requires confirmation from the user

Attention: Copy process will not copy any subdirectories of the directory you are copying !



Deleting files

Delete operation are analogous with copy operations, but all delete operations require user confirmation !

Attention: Delete process will not parse subdirectories and will not delete any subdirectories of the directories you are deleting !

Show File Info

Move the cursor over the file and press Ctrl-F3. The file info will be displayed. Press any key to close the window

